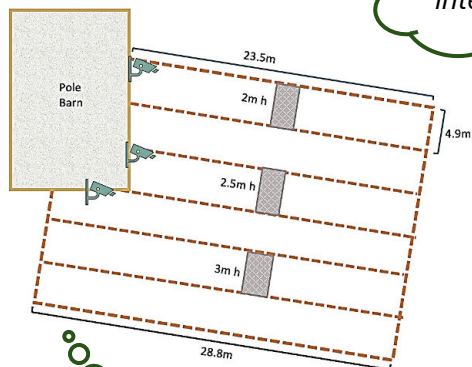


# CattleTracker™ - Research Behind a Cattle-Compatible PV Design – how do cattle interact with a mock-up system?

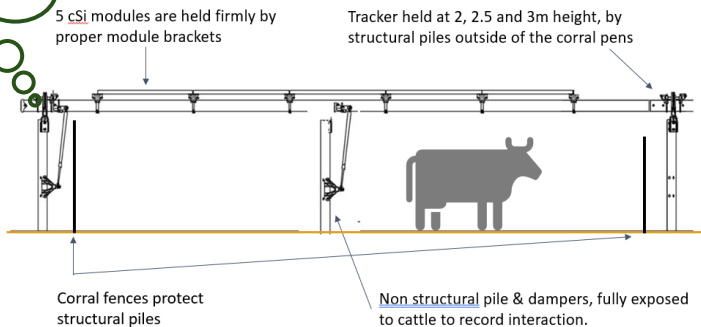
## THE STUDY SITE



What part of the structure do they interact with?

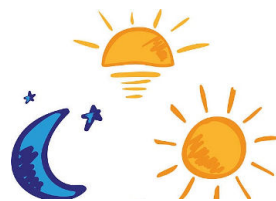
2 m, 2.5 m or 3 m  
Is there a difference?

## THE STRUCTURE



## THE DESIGN

- 1 Height
- 1 group
- 6 cattle
- 2 days
- 3 time periods (AM, mid, PM)



1<sup>st</sup> day or 2<sup>nd</sup> day  
What happens over time?

## THE ANIMALS

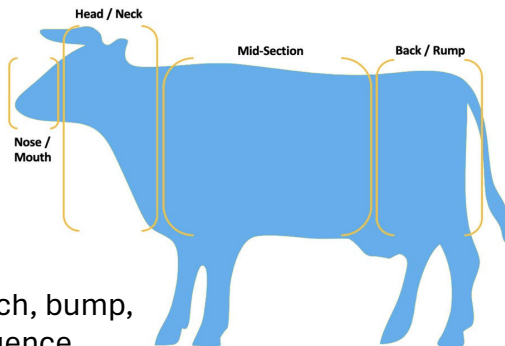
A total of 144 animals  
(1/2 bulls, 1/2 yearlings)

**Bulls and Yearlings**  
Do they act differently??



## THE MEASUREMENTS

What did interactions with the PV structure look like?  
**Where, with what, and how much?**



### Intensity:

- 1 = low intensity touch or accidental bump
- 2 = medium intensity touch, bump, scratch or repetitive sequence
- 3 = high intensity rub, heat butt, hard scratch or destructive play

The video equipment set up

